



Date: May 1, 2022

A33N

Datasheet - Page1

240 Uran Street
Hillsdale, MI 49242



P: 517-437-9100



F: 517-437-9101



www.cobra-aero.com



DESCRIPTION

The A33N Engine System is Cobra Aero's initial entrant in the AXX family of engines. The A33N engine is an all-new purpose designed UAS engine, and it's quickly becoming the standard for all group 2 UAS.



- High power to weight
- Low acoustic signature
- Additively manufactured cylinder, mount, intake, and exhaust system unlock design potential that other manufacturing methods can't (performance, weight, package, sound, efficiency, etc.)
- Hardware, electronics and software all designed specifically for UAS applications
- Machined crankcase with integrated belt driven generator.
- Integrated focal isolation mount
- Passed FAR33 150-hour endurance test
- Alternate A33 Engine configurations available upon request

SPECIFICATIONS

Engine Type:	Air-cooled 2-stroke single
Displacement:	33 cc (2.0 ci)
Mass:	3.15 kg (6.94 lbs) (Includes core engine, exhaust, ECU, fuel pump, injector, ignition, generator, harnesses)
Power Output:	2.2 kW (2.9 HP) at 8350 RPM
Fuel Consumption:	500 g/kW-hr (0.82 lb/hp-hr) cruise
Generator Output:	200W (400 W intermittent)
Fuel Type:	Gasoline 50:1 premix

THE ENGINE PACKAGE INCLUDES

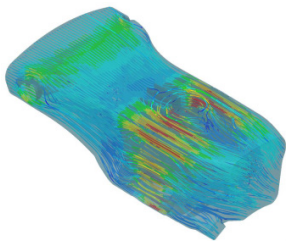
- Power4Flight IntelliJect ECU
- Currawong self-priming fuel pump
- All required EFI sensors and wire harnessing
 - CHT, MAT and Fuel pressure
 - Baro and MAP
 - CDI module
- Fuel pressure accumulator
- Full induction and exhaust system
- Electric power generator with start capability
- Cooling duct with active control

FEATURES

- Altitude compensation
- Cold start compensation
- Superior throttle response compared to carbureted engines
- Onboard data logging, maintenance tracking, and logbook
- Plug n' Play with multiple autopilots
- Free communications ICD and software developers kit for CAN and serial
- Free user interface for engine and configuration development



POWER4FLIGHT





Date: May 1, 2022

A33N

Datasheet - Page2

240 Uran Street
Hillsdale, MI 49242



P: 517-437-9100



F: 517-437-9101



www.cobra-aero.com

